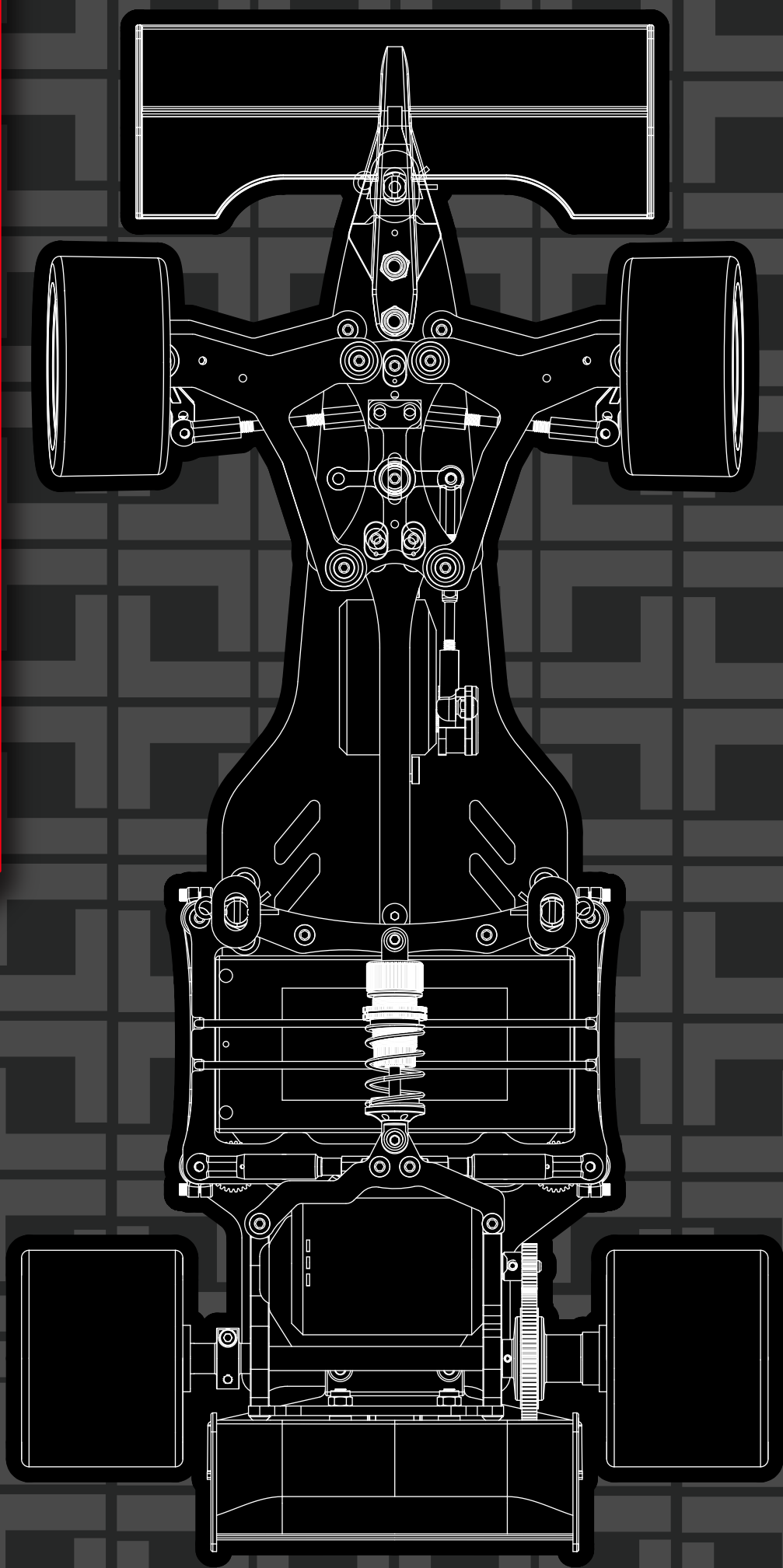


FSX

F1-180-V4



Thank you for purchasing this TEAMSAXO product. This high performance competition kit has been proudly manufactured by TEAMSAXO World Champion R/C car manufacturer.
Proper assembly of this product will provide fun,safe enjoyment.

PRECAUTIONS FOR SAFE ENJOYMENT OF YOUR R/C CAR

For children under the age of 13, parental guidance is recommended when running.

ASSEMBLY PRECAUTIONS

Do not assemble around small children. The parts can be dangerous if accidentally swallowed.

Check the contents carefully before assembly. Please contact Customer Support if you happen to notice any defective or missing items.

You will find the assembly process much easier by carefully reading through the manual,and familiarizing yourself with the instructions.

Many different tools are required during assembly. For safety purposes,please use suitable tools. Exercise extra caution when using a sharp tool such as a hobby knife.

Many different materials are used for the parts. Use extra care when handling parts with sharp edges, such as machined metal parts.

When cutting plastic parts,watch for any flying parts.

Try to assemble any rotating parts of drivetrain parts as smooth as possible.

Bundle wires neatly away from the ground or any moving drivetrain components.Make sure that all wires are properly connected to prevent shorting.

Unnecessary modifications may be unsafe and hinder performance.

Always paint in a well ventilated area away from flames.

PRECAUTIONS BEFORE RUNNING

Teamsaxo R/C cars are built for competition use,and some models may exceed speeds of 40km per hour. Practice common sense and run the car in open safe places,or R/C car tracks.

Do not run the car on public roads with high amounts of traffic,or in areas that may cause an inconvenience to people in that area.

R/C cars are controlled using radio frequency.In a worst-case scenario.radio interferences may cause loss of control.

If others near you are running R/C cars,confirm that they are not running on the same frequency.

R/C cars do not like water.Avoid running on rainy days,or areas with water puddles.Exposure of the electronics to water may cause loss of control or damage to the electronics

The drivetrain of an R/C car consists of many moving parts like gears,belts,shafts,and tires.Avoid touching these areas when the battery is connected.

Many parts of an R/C car will become hot after running. Allow the parts to sufficiently cool before conducting any maintenance

BEGINNING A RUN

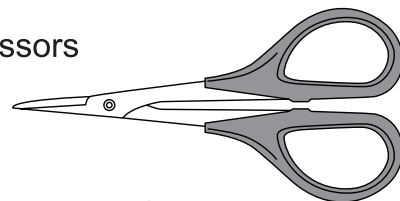
- 1.Place the R/C car on a stand so the wheels are off the ground.
- 2.Confirm that the speed controller switch is OFF,and connect the motor and battery
- 3.Extend the transmitter antenna and turn the switch ON. (It is unsafe to use a transmitter with low voltage.Make sure that the transmitter batteries are good before running)
- 4.Turn the speed controller switch ON.

FINISHING A RUN

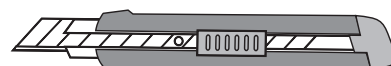
- 1.Turn the speed controller switch OFF.
- 2.Disconnect the battery.
- 3.Turn the transmitter switch OFF,and retract the antenna.

ASSEMBLING TOOLS REQUIRED (NOT INCLUDED IN KIT)

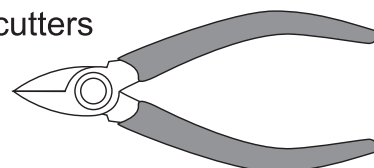
Scissors



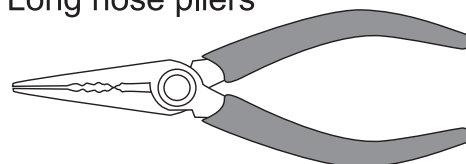
Modeling knife



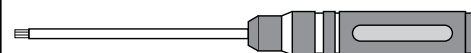
Side cutters



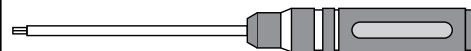
Long nose pliers



Hex wrench (1.5mm)



Hex wrench (2mm)



Tweezers



F1-180-V4 CHASSIS SPECIFICATION

Overall Length	: 400mm	Overall Width	Front width :185mm
Wheelbase length	: 255mm		Rear width :190mm
Weigh Chassis only	: 400g		

Cap

	M2x6	SJG206
	M3x4	SJG304
	M3x6	SJG306
	M3x8	SJG308
	M4x18	SJG418

Cap screw

	M2.5x8	SG2.508
	M2.5x6	SG2.506
	M2x6	SG206

E-Ring

	E-ring2.0	OE-E2.0
--	-----------	---------

Screw

	M2x4	SIG204
	M3x6	SIG306
	M3x8	SIG308
	M3x10	SIG310
	M3x16	SIG316

Grub screw

	M3x3	SK303
	M3x8	SK308
	M3x10	SK310

Lock nut

	M3	SN-M3
	M3	SN-M3-F
	M4	SN-M4
	M4	SN-M4-F

Ball bearing

	5x8x2.5	MR085
	5x8x2.5	MF85ZZ
	6.35x9.525x3.175	FR168ZZ
	6.35x9.525x3.175	R168-2RS
	5x10x4	MR105



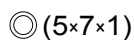
① ~ ③ Kit Bag A



TS0104109.....6

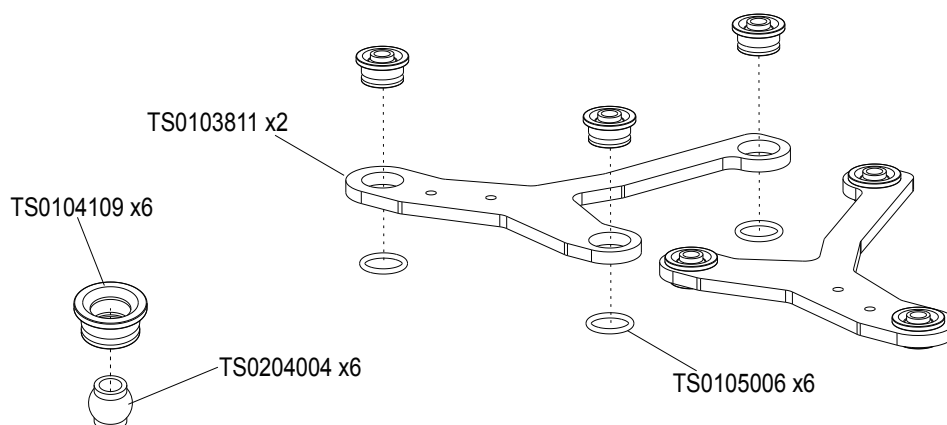
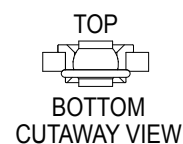


TS0204004.....6



TS0105006.....6

① Upper arms



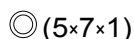
COMPOSITE BALL



TS0104109.....2



TS0204004.....2



TS0105006.....2

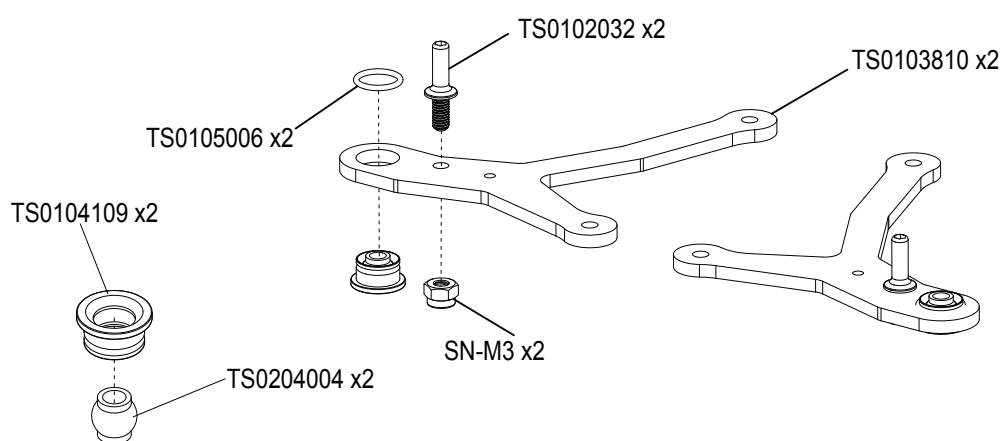
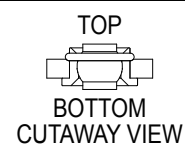


TS0102032.....2

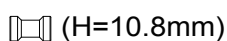


SN_M3.....2

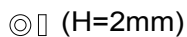
② Lower arms



COMPOSITE BALL



TS0201005.....4



TS0101054.....4

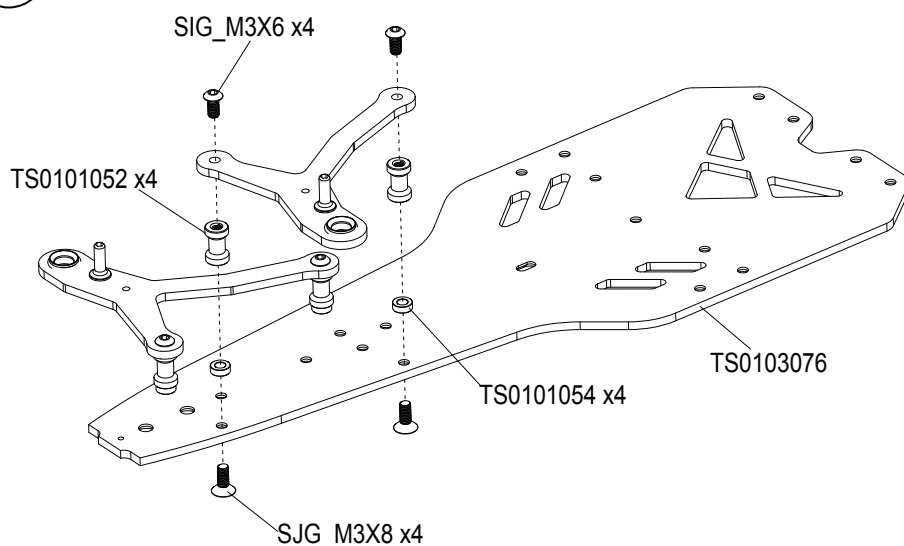


SJG_M3X8.....4



SIG_M3X6.....4

③





④ ~ ⑦ Kit Bag B



TS0101007.....3

⊙ (H=2.0mm)

TS0101054.....1

⊙ (H=2.5mm)

TS0101029.....2

⊙ (5×8×2.5)

MR085-OR.....1



SIG_M3X6.....1



SIG_M3X10.....3



SJG_M3X6.....1



TS0101073.....2



TS0102017.....1



TS0102016.....2



SIG_M3X10.....1



SJG_M3X8.....4

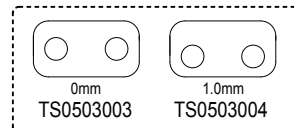
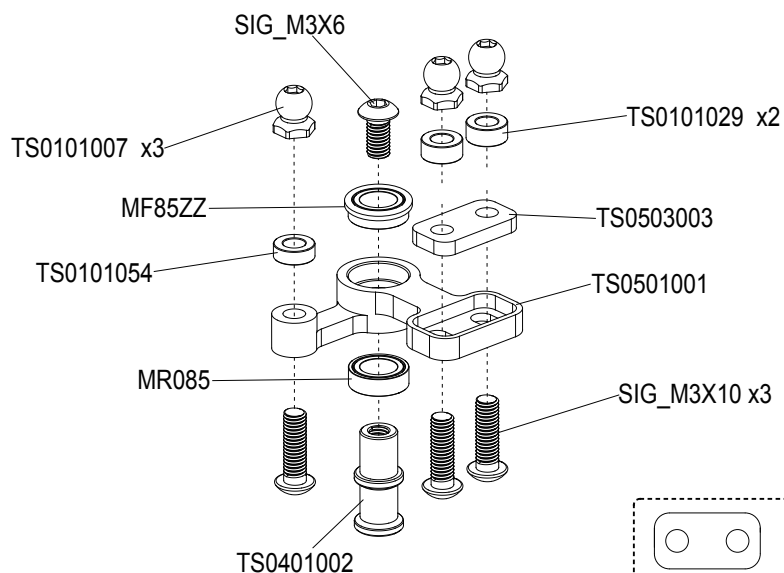


SIG_M3X8.....1

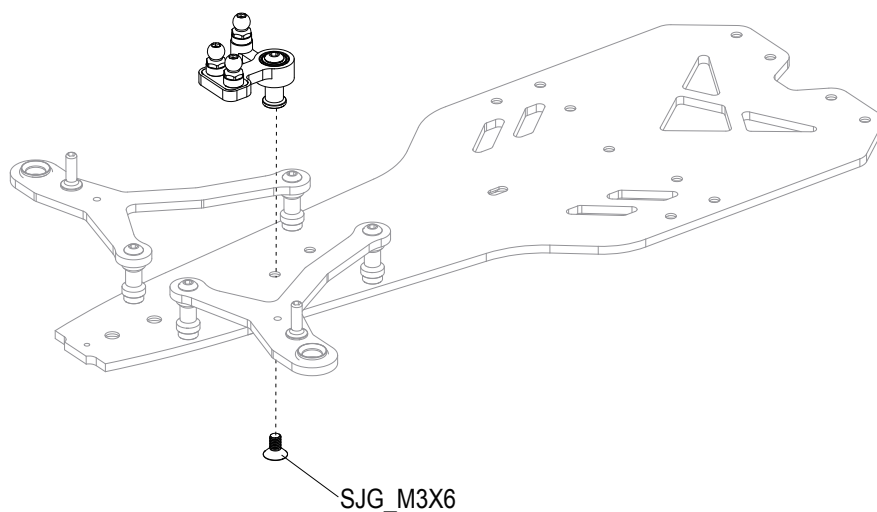


TS0101033.....4

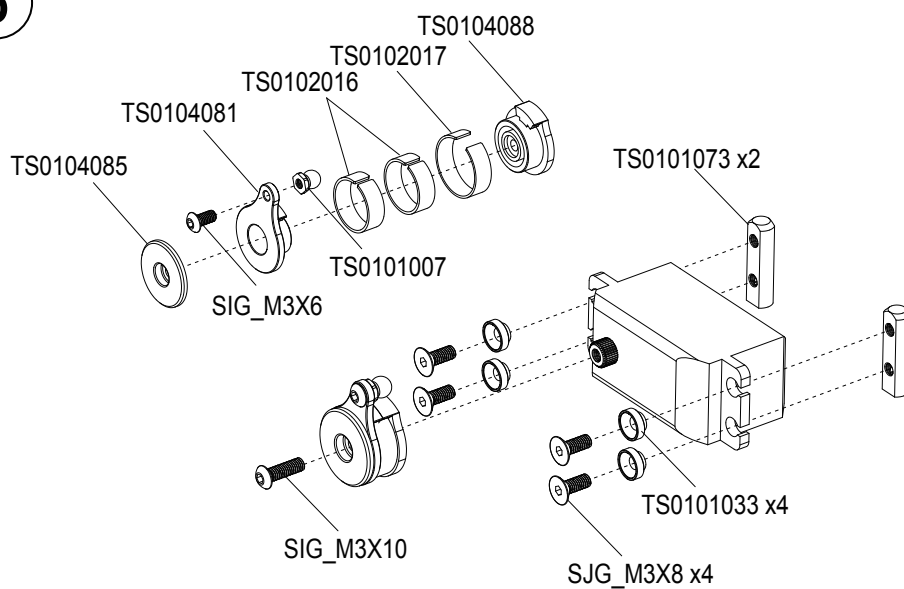
4




5

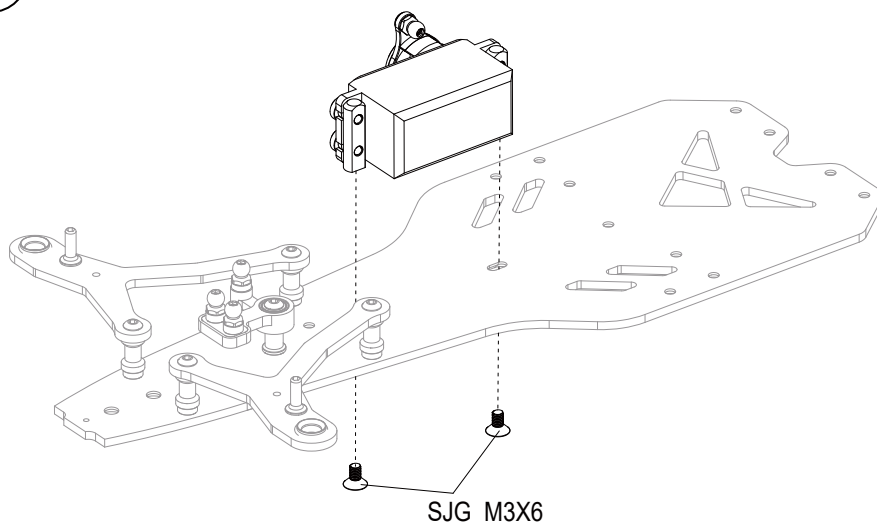


6





 SJG_M3X62

7

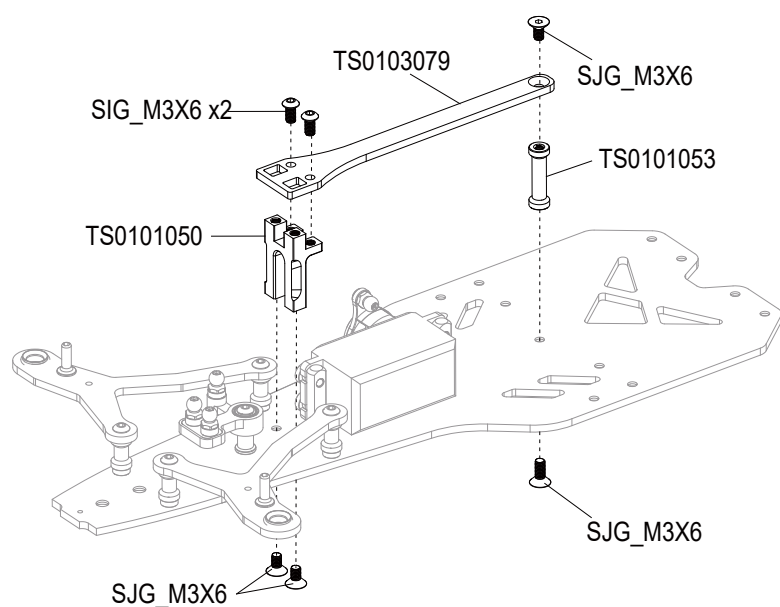



8 ~ 15
Kit Bag C


 SJG_M3X85


 SIG_M3X64


8




 TS01010511

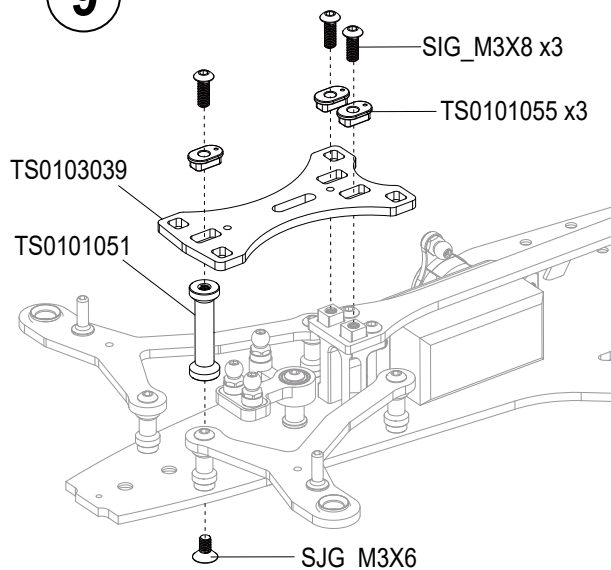
 (CASTER6°, 9°)
TS01010553

 (CASTER3°, 12°)
TS01010563

 SJG_M3X61

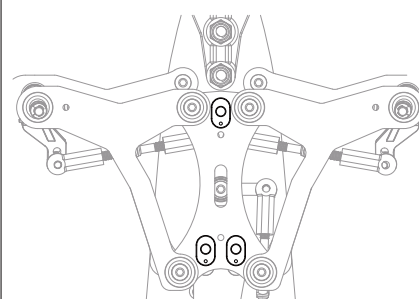
 SIG_M3X83

9



IMPORTANT!

All three bushings MUST have same orientation.
These bushings adjust the front CASTER:



INITIAL SETTING

These eccentric bushings adjust the front CASTER.
MORE caster angle = better cornering speed, increased traction rolling.
Use on large, open tracks where cornering speed is needed.
LESS caster angle = more reactive steering. Use on technical tracks where a lot of steering response is needed.

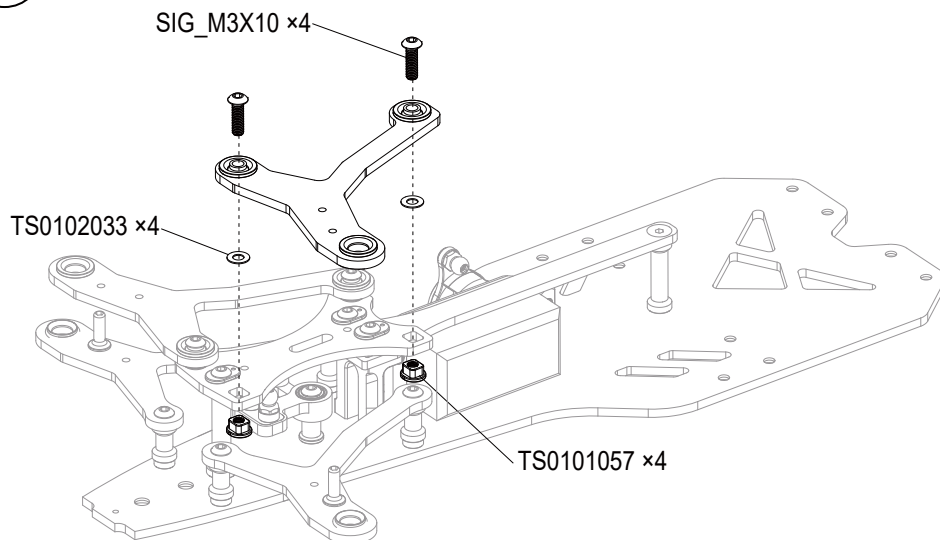
⊙ (CASTER1.5°, 2.0°)
TS0101057.....4

⊙ (CASTER1.0°, 2.5°)
TS0101058.....4

⊙ | (3×6×0.3)
TS0102033.....4

⌘
SIG_M3X10.....4

10



⌘
TS0101007.....2

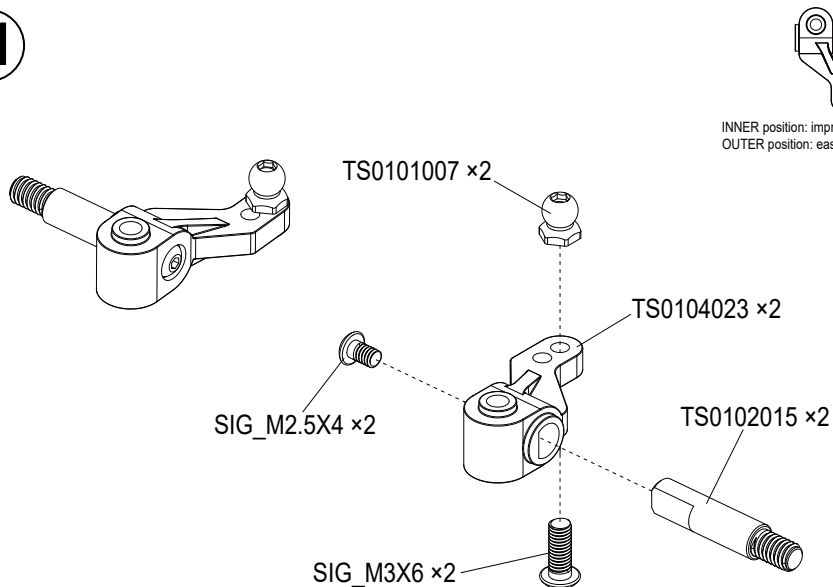
⌘
TS0102015.....2

⌘
TS0104023.....2

⌘
SIG_M2.5X42

⌘
SIG_M3X62

11



⌘ (L=33.6mm)
TS0102013.....2

⌘
TS0101030.....2

⊙ | (H=0.5mm)
TS0101026.....6

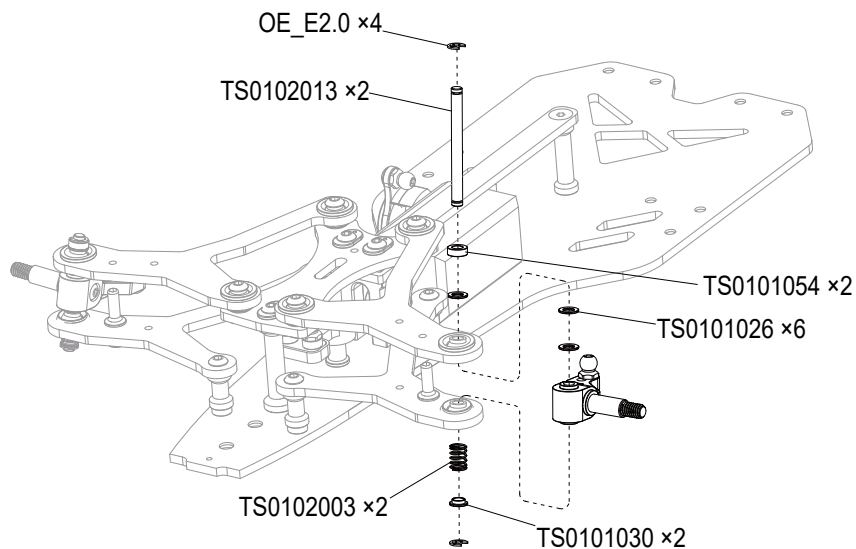
⊙ | (H=2.0mm)
TS0101054.....2


⌘
TS0102003.....2


⌘
OE_E2.04

12

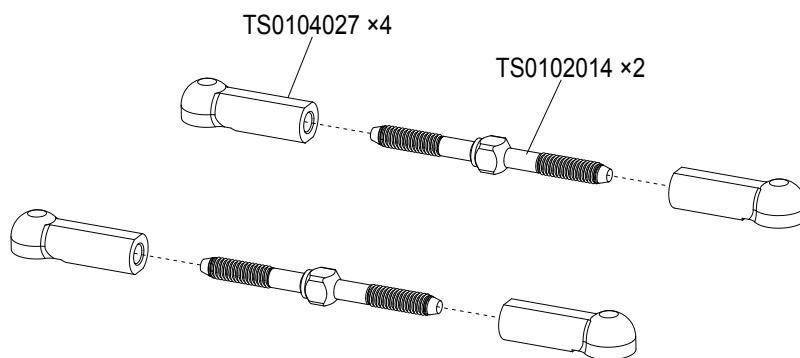
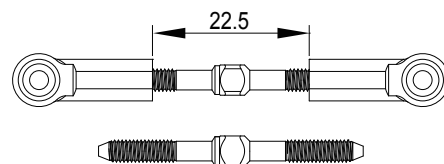
Motor mount

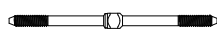



 (L=35mm)
TS0102014.....2


TS01040274

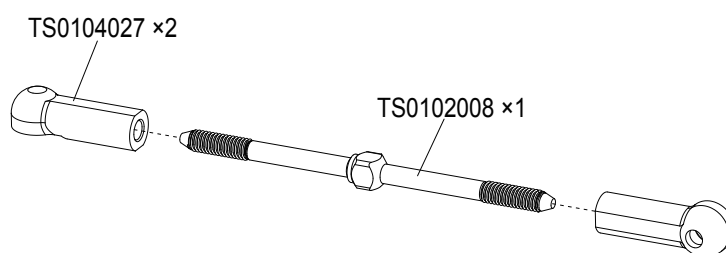
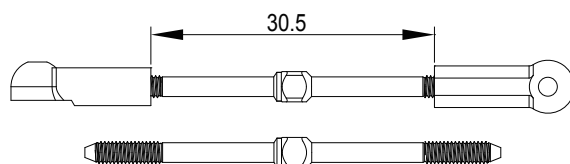
13



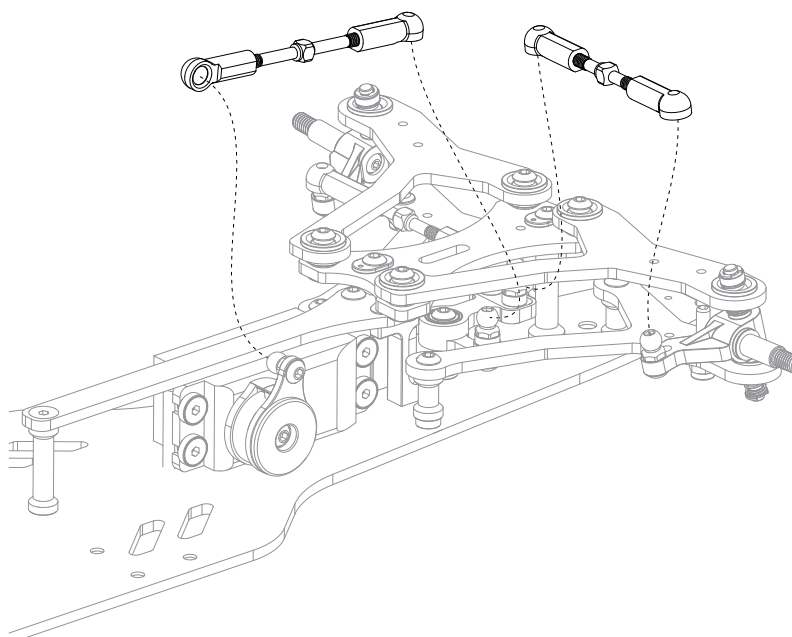
 (L=45.7mm)
TS0202008.....1


TS01040272

14



15



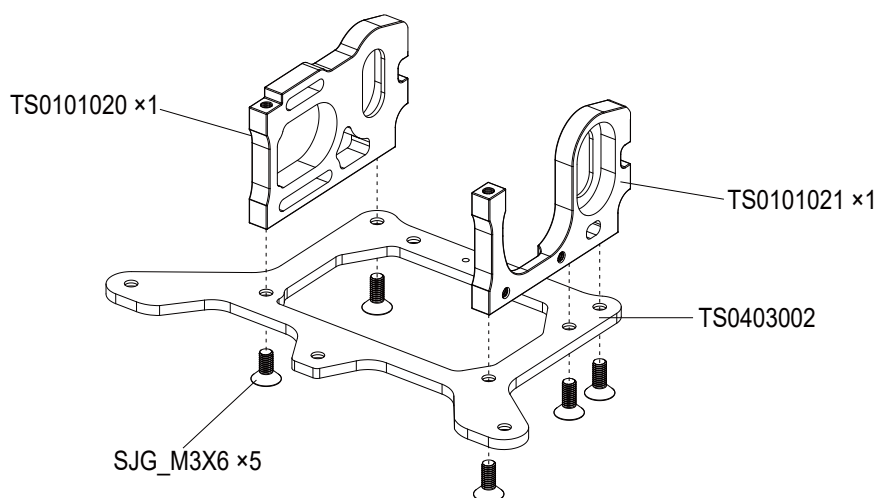


⑬ ~ ⑮
Kit Bag D



SJG_M3X65

⑮



⑮ ~ ⑲
Kit Bag E

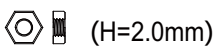
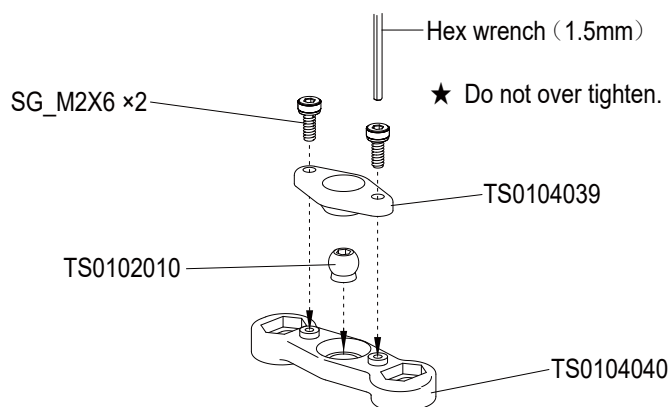


TS0102010.....1



SG_M2X62

⑮



TS0201031.....2

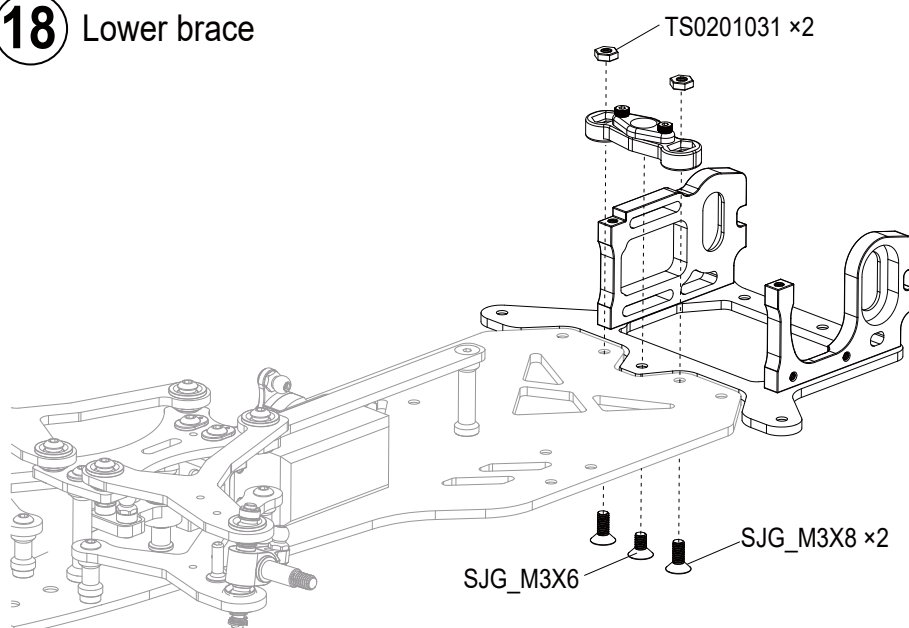




SJG_M3X61



SJG_M3X82

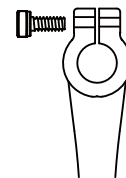
⑮ Lower brace



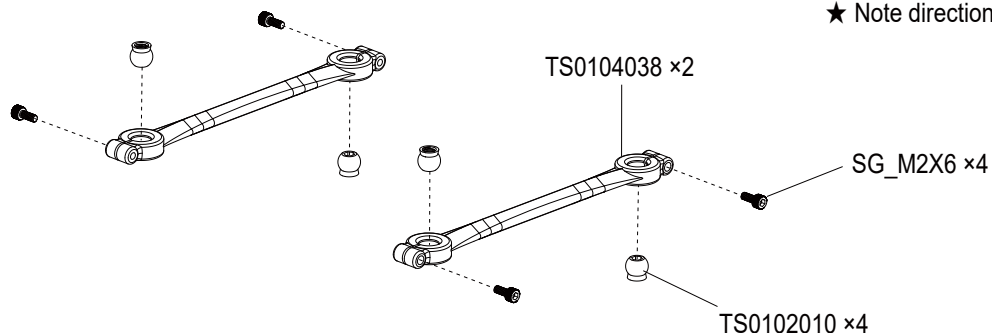
 TS0102010.....4
 SG_M2X64


19 Attaching lower brace

★ Do not over tighten.

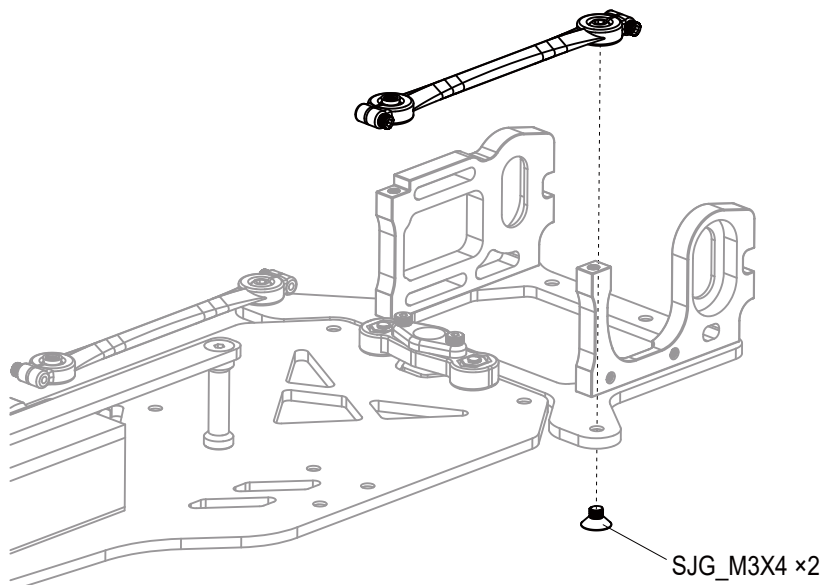




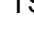
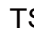

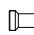

★ Note direction



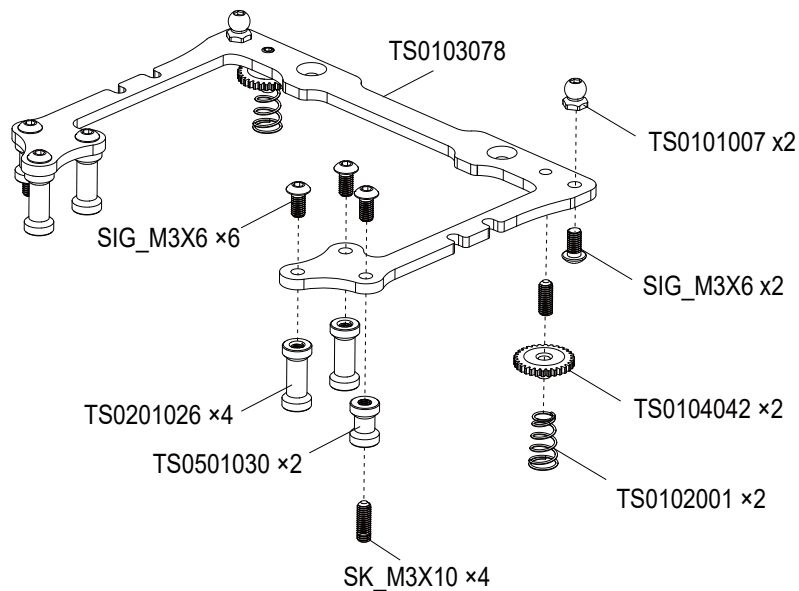
 SJG_M3X42

20



 TS0101007.....2
 TS0102001.....2
 TS0104042.....2
 SIG_M3X68
 (L=15mm)
 TS0201026.....4
 (L=9.6mm)
 TS0501030.....2
 SK_M3X102

21





TS02030192

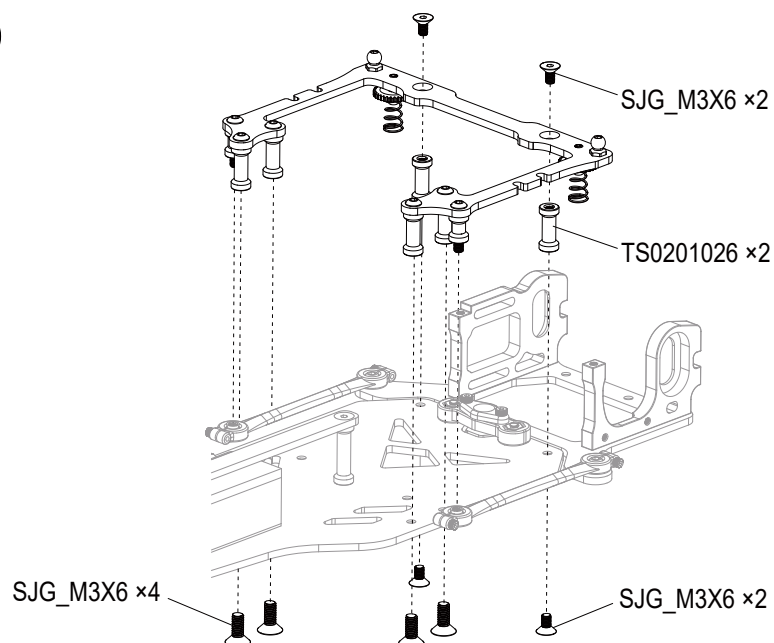


SJG_M3X64

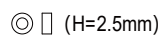


SJG_M3X64

22



TS01010073



TS01010291

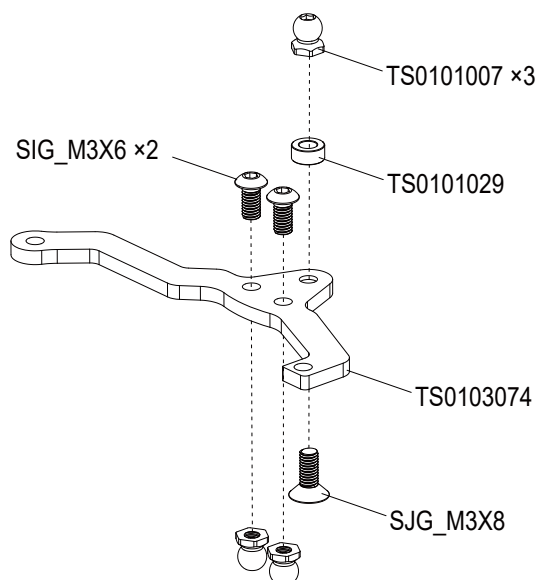


SJG_M3X81



SIG_M3X62

23

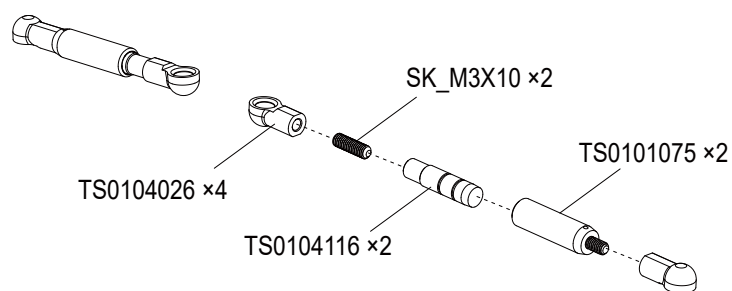


TS01040264



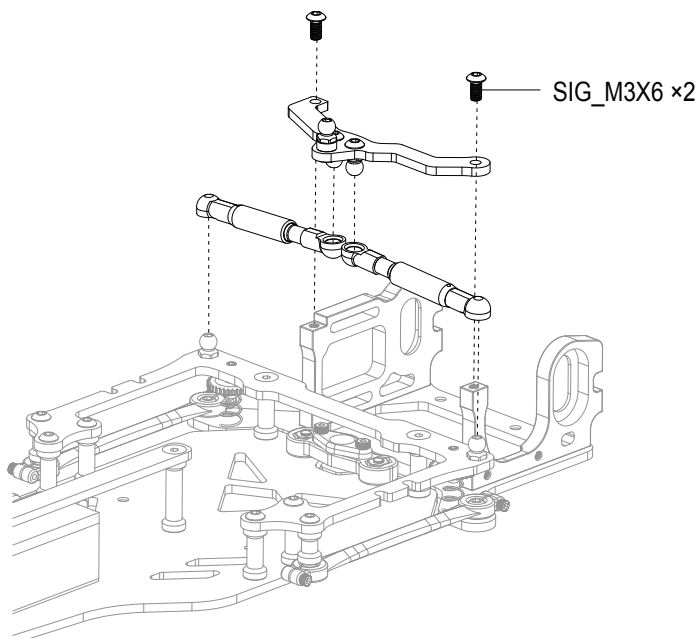
SK_M3X102

24



SIG_M3X62

25



26 ~ 28
Kit Bag F

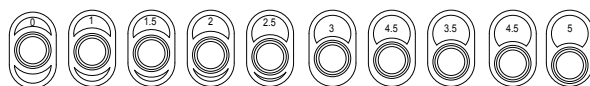
(Ø6×129mm)
TS010231

TS0101002.....1

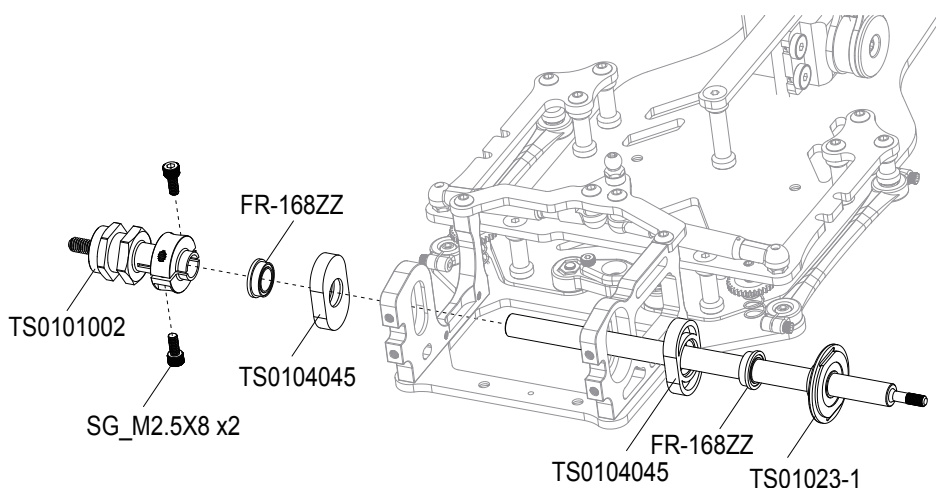
(Ø6.35×Ø9.525×3.175)
FR168ZZ2

SG_M2.5X82

26



★ These eccentric bushings adjust the RIDE HEIGHT of the rear pod.
Make sure to use the SAME eccentric bushings on BOTH sides.



TS0501021.....1

TS0102004.....2

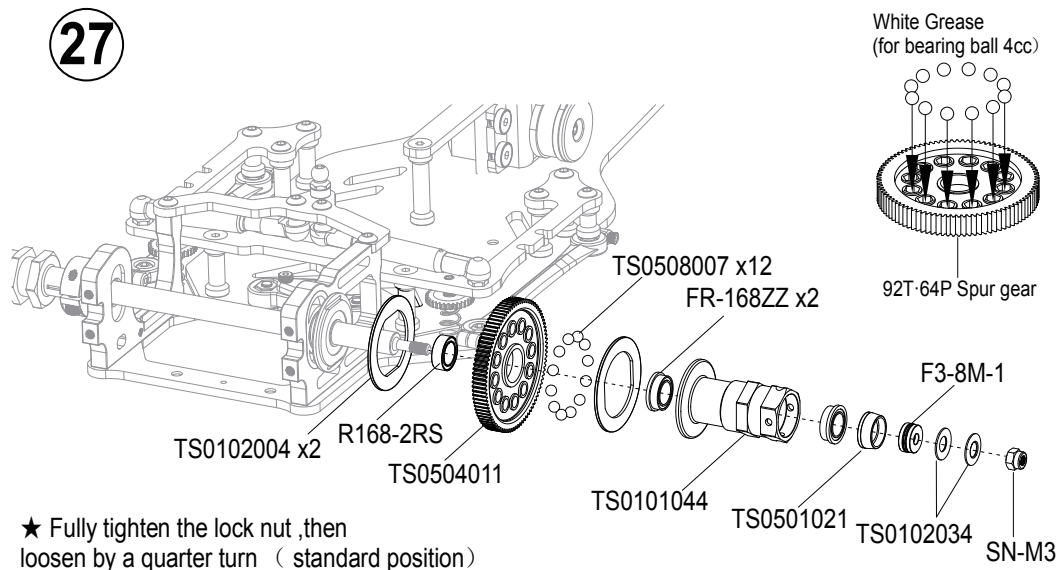
(Ø6.35×Ø9.525×3.175)
R168-2RS1

(Ø6.35×Ø9.525×3.175)
FR168ZZ2

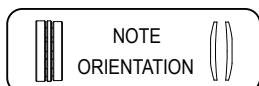
TS0102034.....2

SN_M31

27



★ Fully tighten the lock nut ,then
loosen by a quarter turn (standard position)





TS01010051

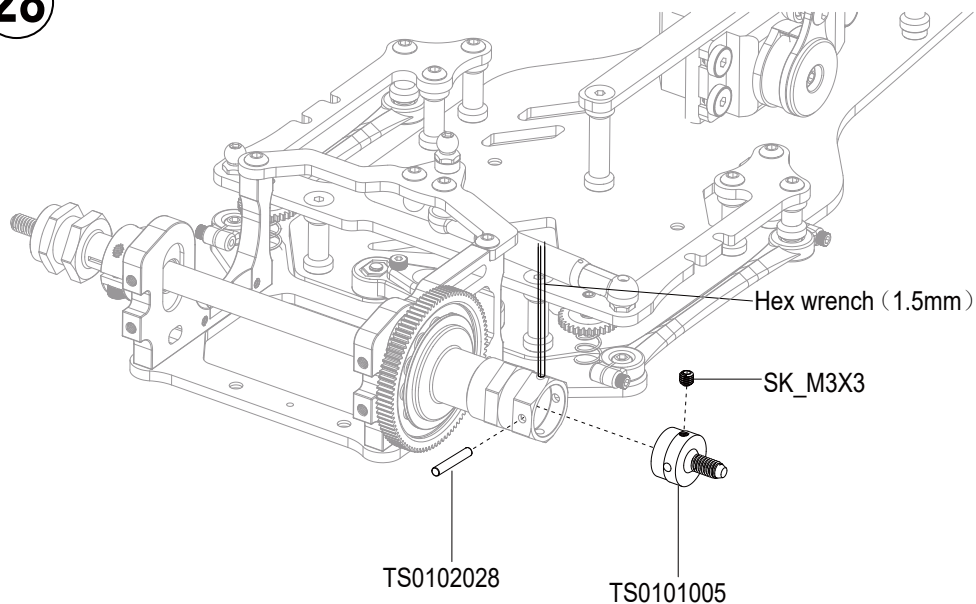
— (Ø2×14)

TS01020281



SK_M3X31

28



29 ~ 34
Kit Bag G

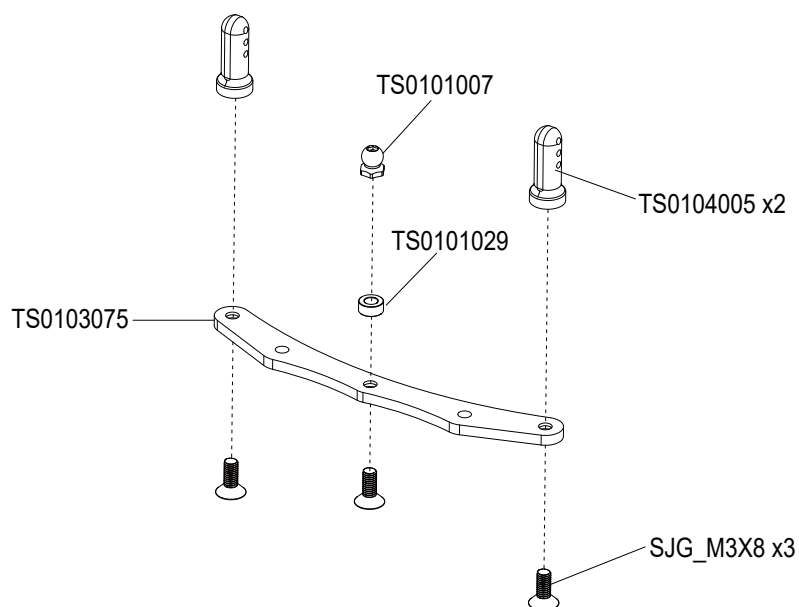


TS01040052



TS01010071

29



— (L=26mm)

TS01010482

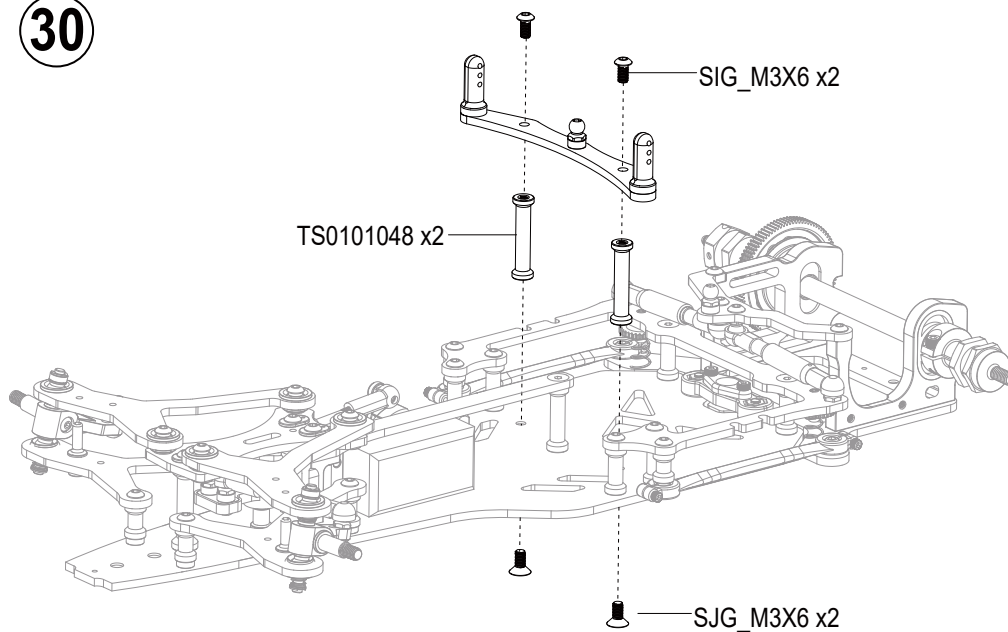


SJG_M3X62

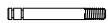
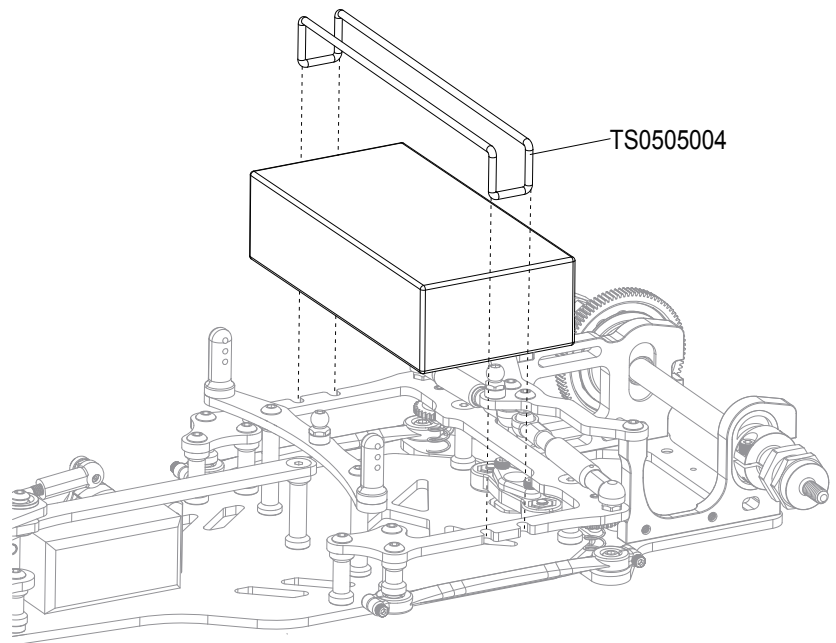


TS01010482

30



31



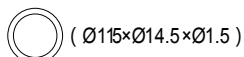
TS01020091



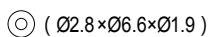
TS0104034.....1



TS01040371



TS0105002.....1



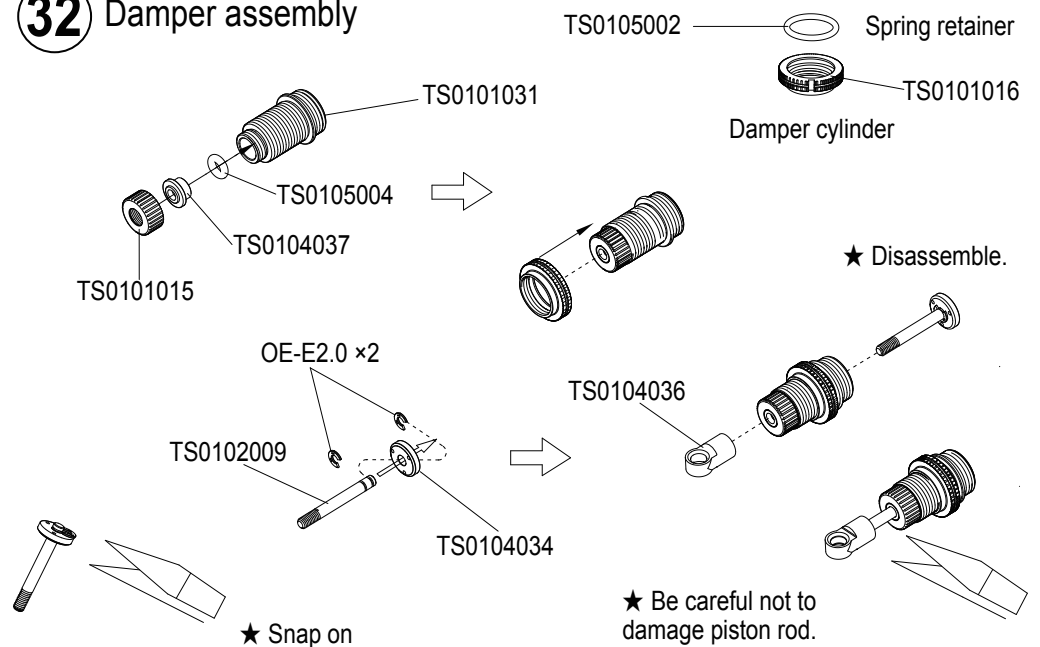
TS01050041



OE_E2.02

32

Damper assembly



TS0105001.....1

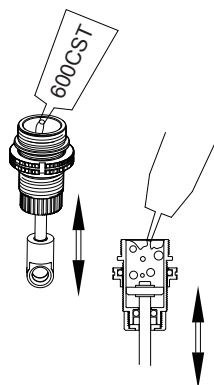
33

Damper oil

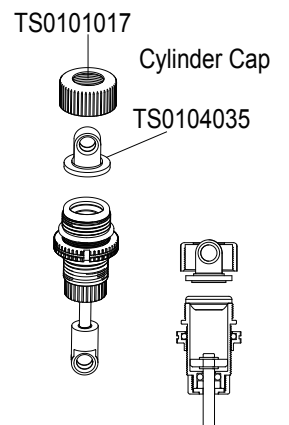
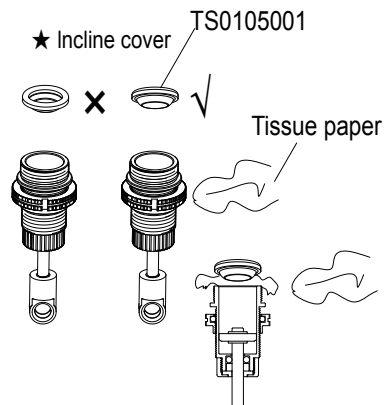
1.Pull down piston and pour oil into cylinder .Remove air bubbles by slowly moving piston up and down.

2.Pull down piston, attach oil seal and absorb oil overflow with tissue paper.

3.Tighten cylinder cap.



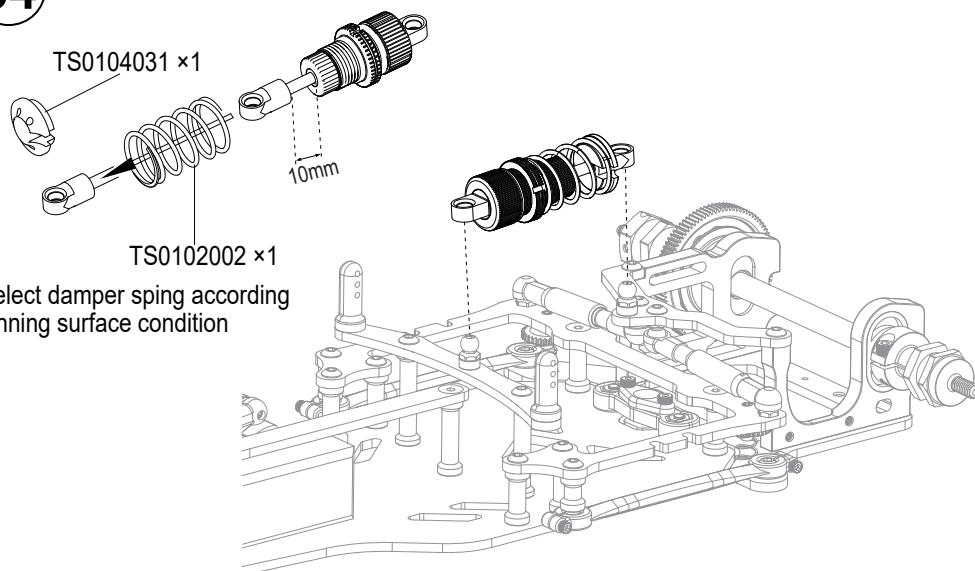
★ Move slowly.





TS01020021

34

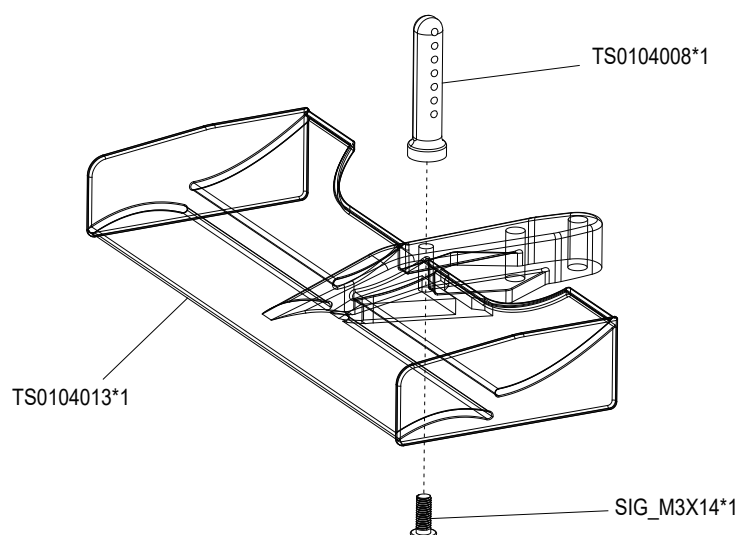


35 ~ 44
Kit Bag H



SIG_M3X141

35

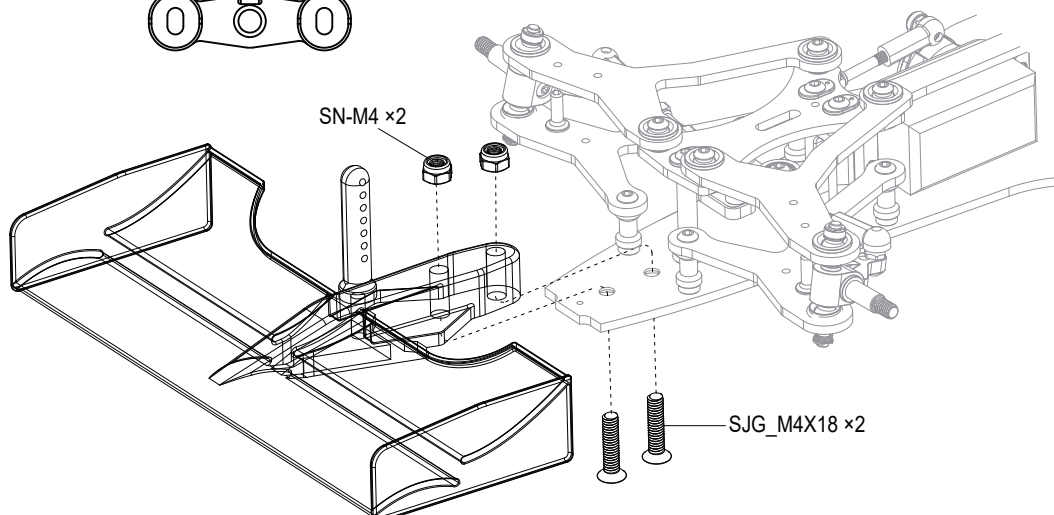
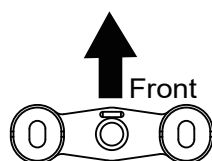



SJG_M4X18.....2



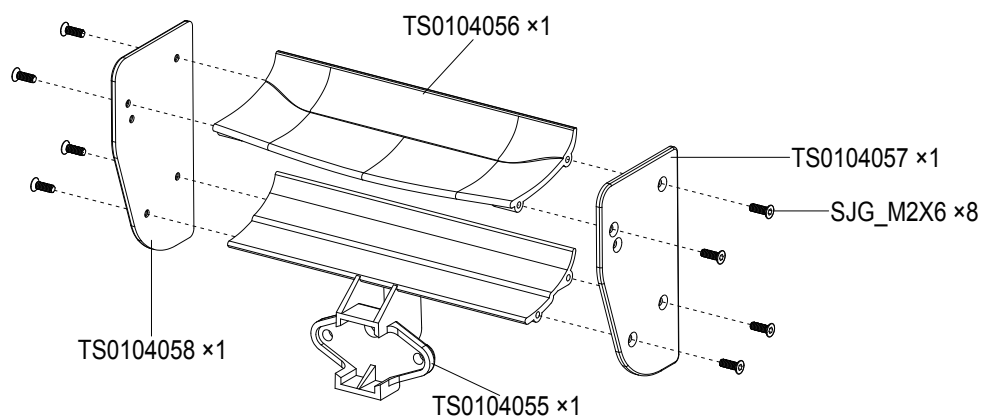
SN_M42

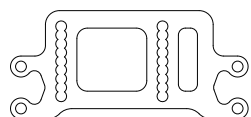
36





 SJG_M2X68


37



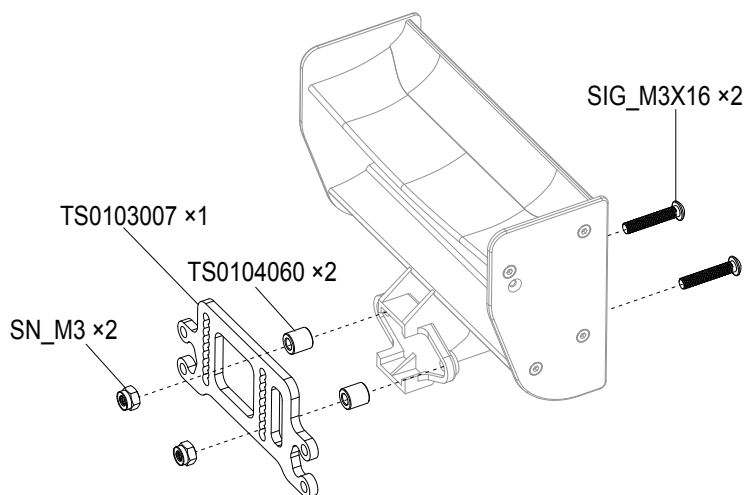
 TS01030071


 TS01040602

 SN_M32

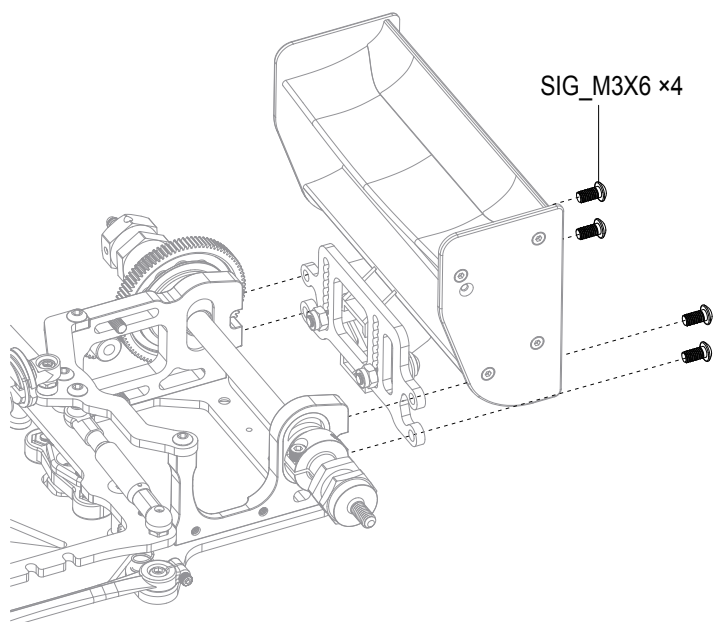
 SIG_M3X162

38



 SJG_M4X18.....4

39



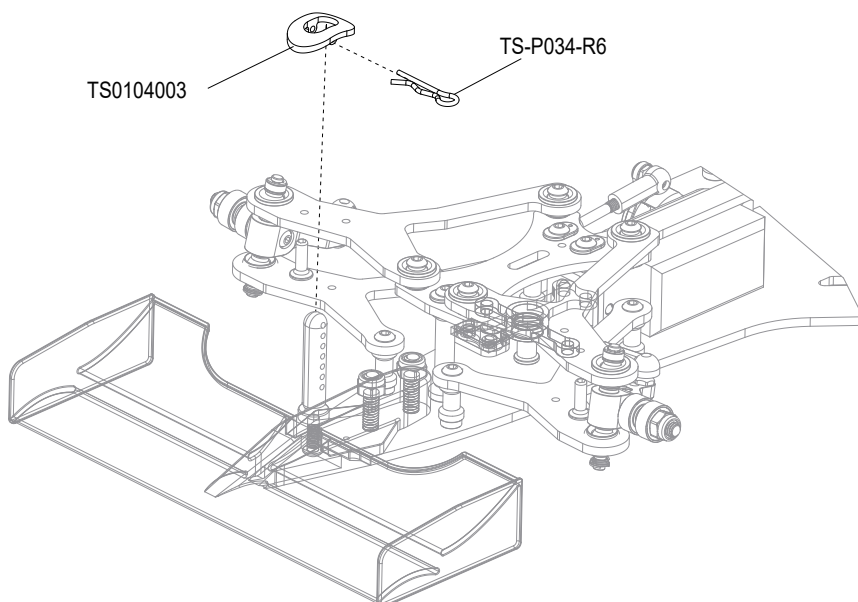


TS01040031



TS-P034(R6)1

40

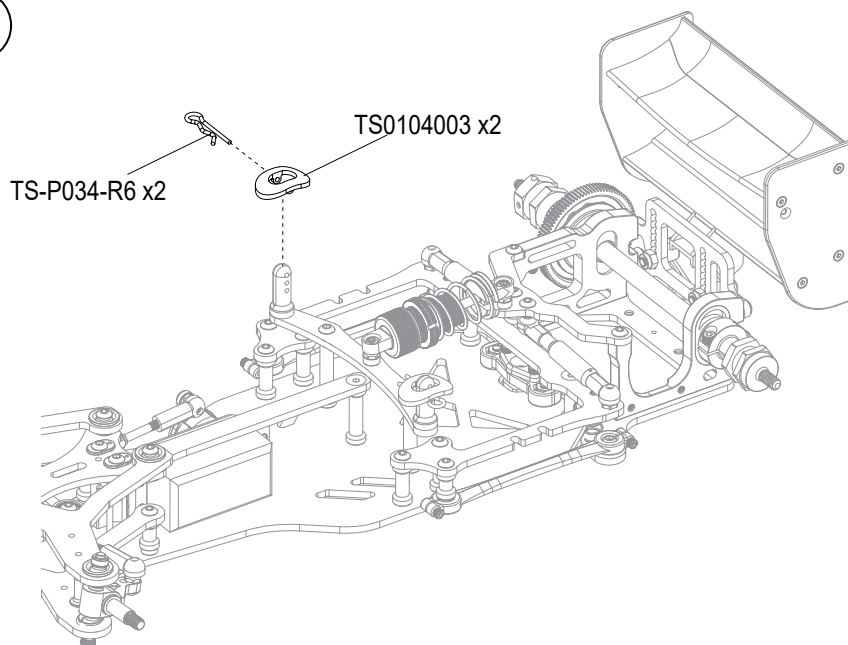


TS01040032

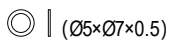


TS-P034(R6)2

41



SN_M42

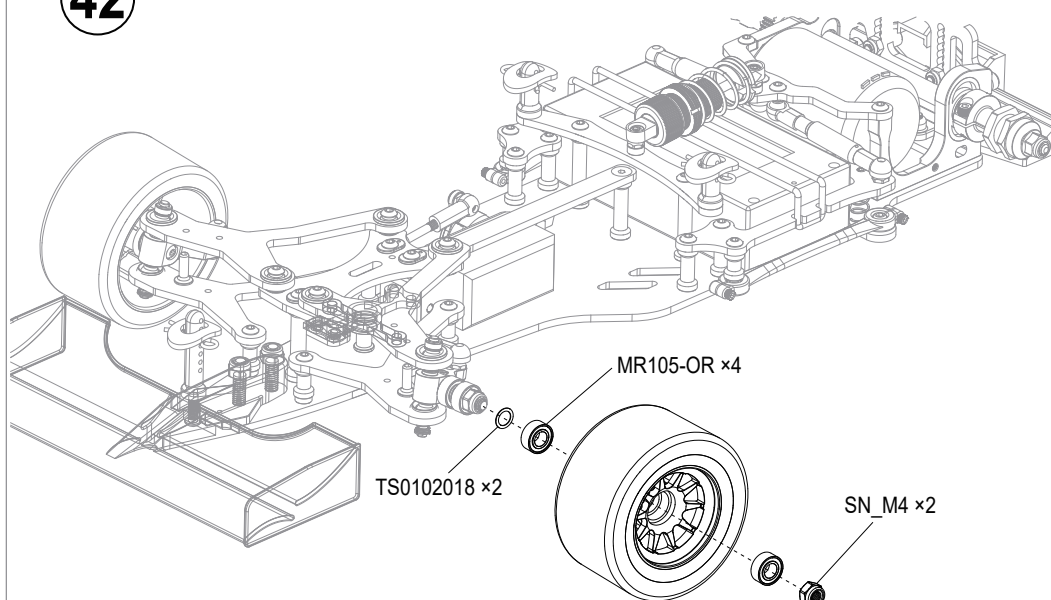


TS0102018.....2



MR105-OR4

42

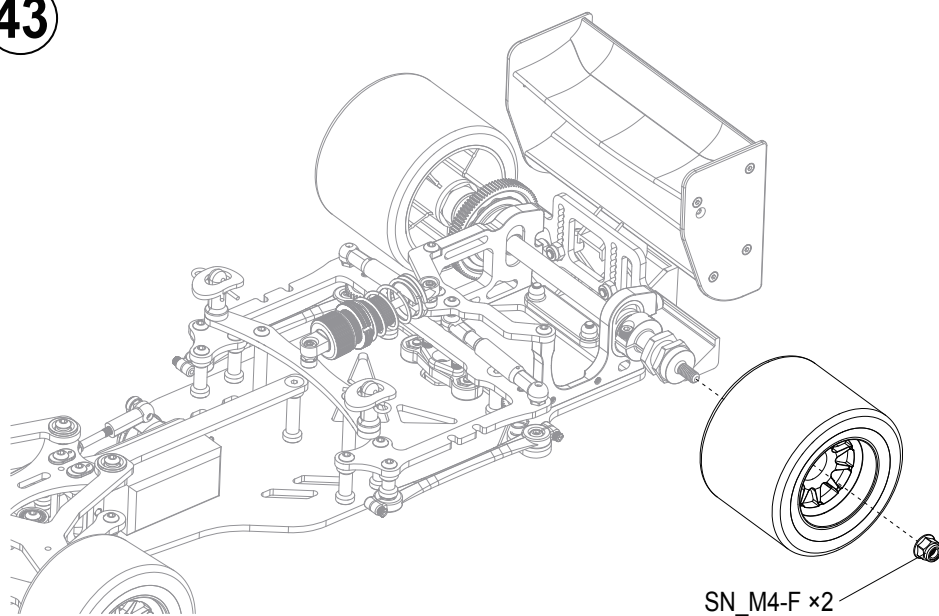




SN_M4-F

.....2

43



VAPON INDUSTRIAL CO., LTD
[Http://www.saxoracing.com](http://www.saxoracing.com)
[E-mail:saxo@saxoracing.com](mailto:saxo@saxoracing.com)



F1-180-V4

